

COMMERCIAL-GRADE ARMOR FOR ALL SOD TYPES

MADE IN THE USA



2022

[www.upscapers.com](http://www.upscapers.com)  
619-554-0201



**SHIELDSCAPE**

by **UP**scapers

HYBRID-TURF SYSTEM





North America's preeminent source for faux and hybrid greening offers a state-of-the-art American-made hybrid turf for the ultimate in look, feel and protection.

## LANDSCAPE WITHOUT LIMITS

ShieldScape is a hybrid grass product that protects and stabilizes natural grass by reinforcing the living grass root system. ShieldScape allows living grass to grow up through the simulated turf surface. This growth combined with the engineered, shielding faux grass blades creates a formidable surface, providing luxurious looking and feeling real grass that lasts in high traffic, hard-wear and sloping common areas.

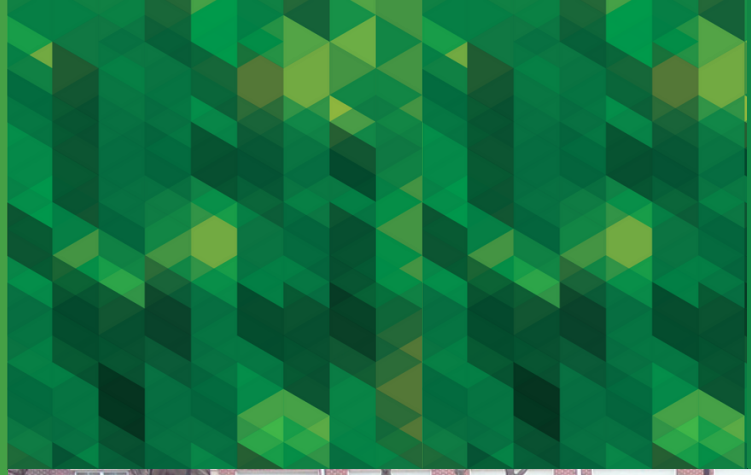




# HOW IT WORKS

01

prepare the  
ground: rake, level  
& seed and  
cover with more  
topsoil



02

roll out



**SHIELDSCAPE**

cut as needed and secure  
edges



03

spread additional top soil around  
edges and protect area during seed  
growth and integration.



# THE SMART COMPLIMENT TO COMMERCIAL DESIGN

All-Weather Surfacing: Commercial, Residential,  
Government & Military Common Use Areas

## ENGINEERED FOR

- High Traffic Areas
- Common Areas
- Shaded, Low Light Areas
- Poor Draining Areas
- LEED Credit Qualifying
- Pet-Friendly Landscape
- Children Friendly Landscape
- Poolside Landscape Design

Simulated grass blades deflect foot traffic and rainfall stress away from the fabric backing substantially reducing received forces acting upon the underlying soil. ShieldScape is engineered to provide a reinforcing grid to permanently support and increase the natural vegetation's breakdown and erosion resistance, providing the look you desire and the long-term performance commercial applications need.





# HYBRID LANDSCAPE DESIGNED FOR REAL LIFE

All-Weather Surfacing: Commercial, Residential,  
Government & Military Common Use Areas

## ENGINEERED FOR

- Pet & Family Friendly Landscape
- High Traffic Areas
- Shaded, Low Light Areas
- Poor Draining Areas
- Children's Play Areas
- Pet-Friendly Landscape
- Poolside Landscape Design

Elevate residential landscape design with landscape cover engineered with finesse. Shieldscape is designed for both performance and people. Durable enough to walk and sit on without worrying about discomfort, injury or damaging the turf. You can safely walk, jump play on ShieldScape without compromising on soil protection. ShieldScape is the perfect solution for high-use residential areas.



# DESIGN WITH CONFIDENCE

## Trusted & Tenured

with GrassWorx.

- Highest quality US manufacturing
- Working plastics manufacturing powerhouse GrassWorks in St. Louis MO.
- Proven performance with high performance results since 2017.
- Continuous independent & third party testing
- Infrastructure to recycle ShieldScape at end-of-life.
- Invented nine surfacing products for various needs with thousands of installations throughout the US.

## Notable Work - Vast Experience

with upscapers

- Hilton Hotels
- Marriott Hotels
- Intercontinental Hotels
- United States Air Force
- Google
- NFL
- NYC PD
- American Express
- Lifetime Fitness
- Mellow Mushroom



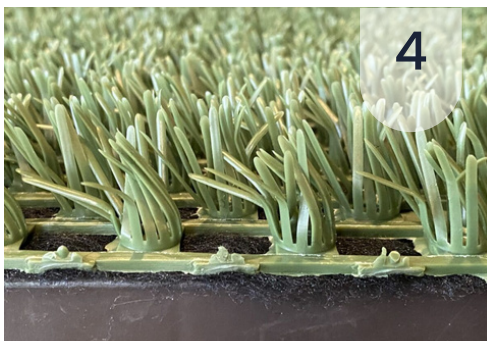
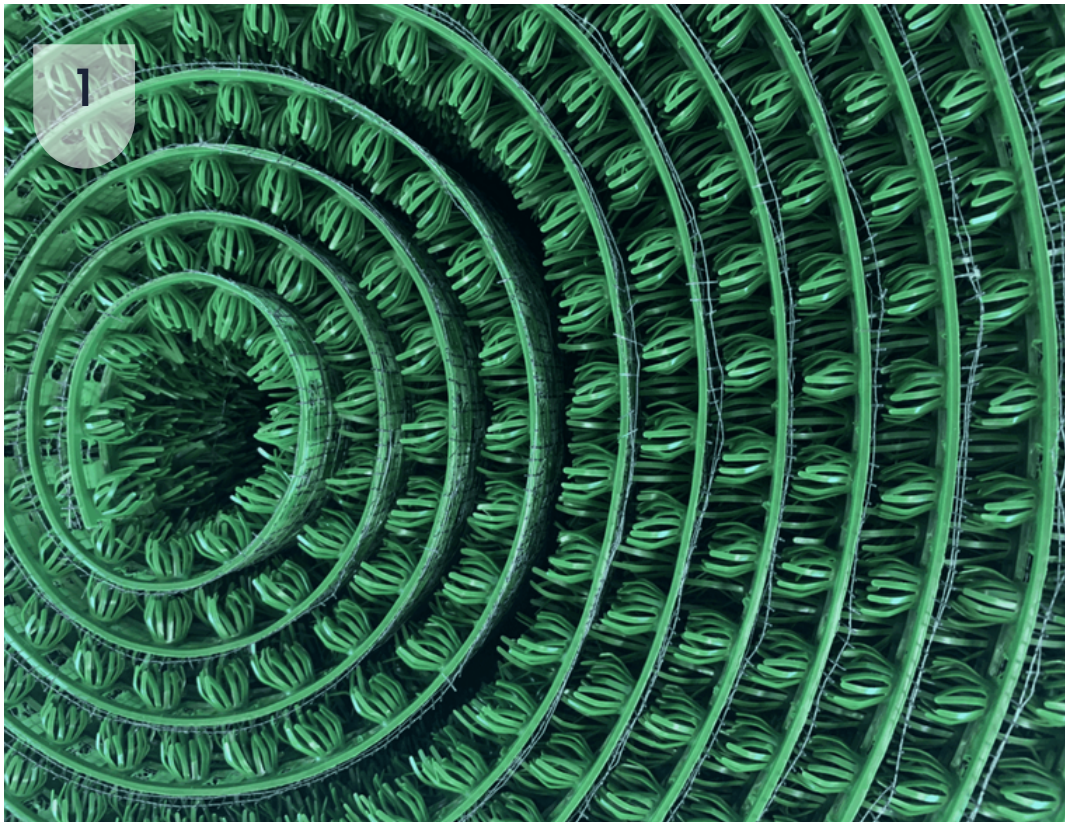
U.S. AIR FORCE



NYPD

LIFETIME



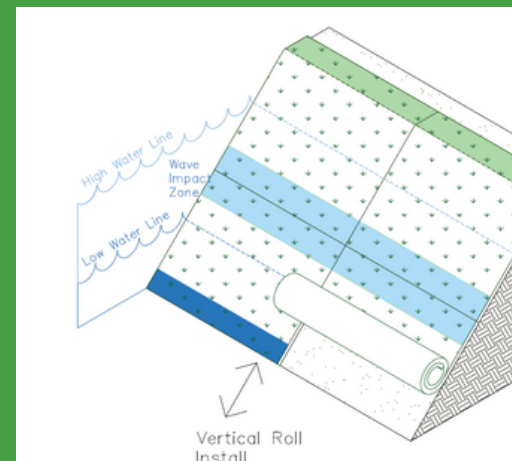
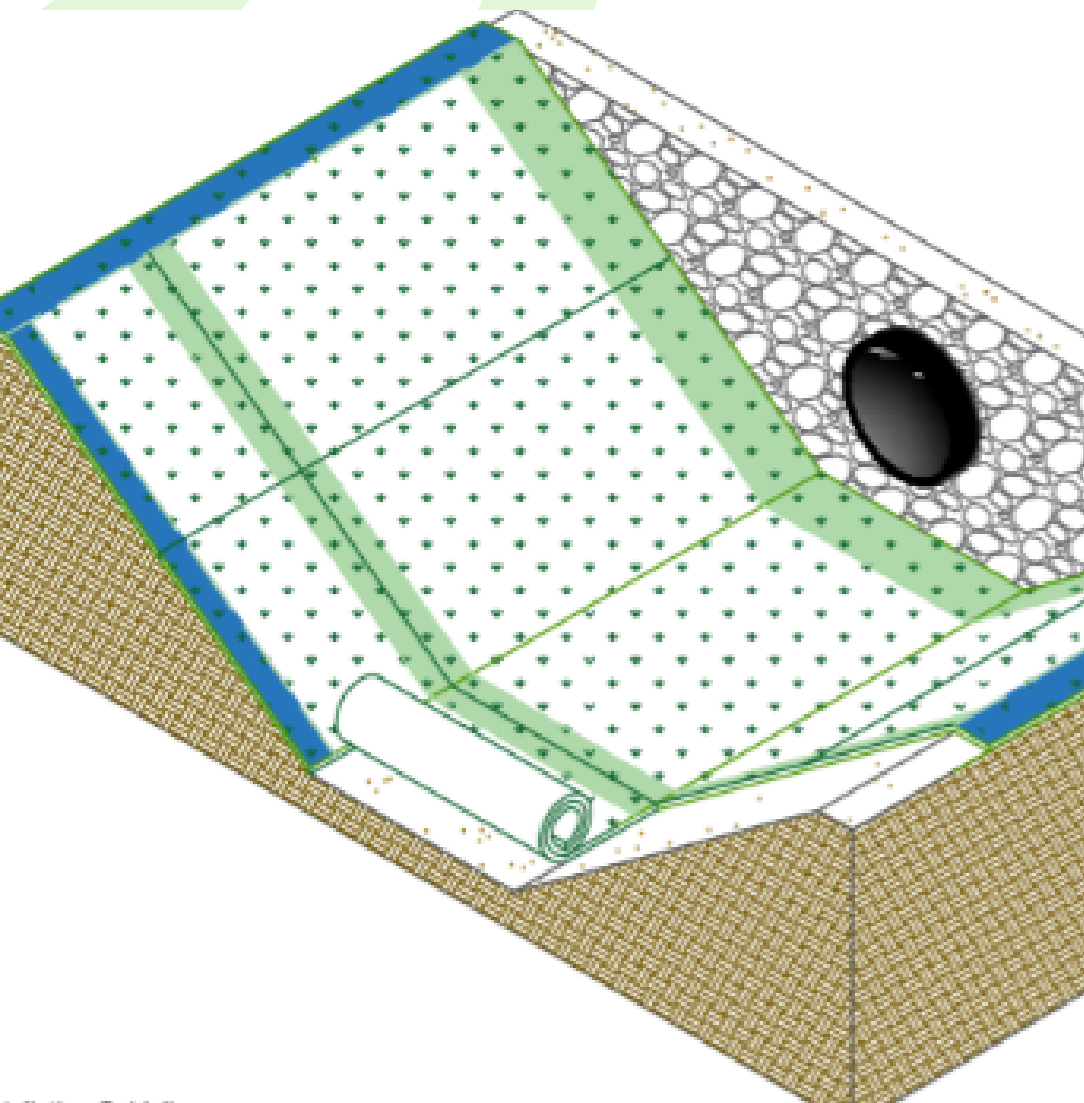


1. **STAYGREEN** - UV inhibitors protect against fading while live grass grows in
2. **TRUMATCH** - Protective growing grid, replicates the color of sod while providing the most hospitable environment and traffic shield for delicate sod fibers.
3. **FRESHLAWN** - Inherently antimicrobial fibers support natural grass as it matures.
4. **RESILIENCY**- State-of-the-art polymer process provides unmatched resiliency and traffic protection



# Technical Resources

- **LEED Contributions:** Maximize Open Space, Water Efficient Landscaping, Recycled Content, Landscape Management Plan
- **ASTM Testing:** Permeability Testing - Erosion Testing
- **ADA:** From commercial common areas to play and multi-use fields. Shieldscape conforms to ADA requirements and is approved by the ADA for use in all applications
- **CAD:** Specs, CSI Details and CAD Drawings available.





# ECONOMICAL & FUNCTIONAL



## COST SAVING VERSATILITY

- dramatically reduces replacement and repair costs
- Year-round availability in all climates
- Instant green surface evolving into a soft, cool natural grass surface.
- Supreme longevity, UV inhibitors protect against fading
- 100% recyclable

## INSTANT PERFORMANCE FOR

- Child Development Playground Areas
- Multi-use fields
- Waterside applications
- Golf Courses & Driving Ranges
- Commercial Landscape Areas
- Government Property - Parade Grounds

## LOW LIGHT SOFTSCAPE SOLUTION

### SHADE

Complete growth over product area  
Eliminates bare patches in low light environments  
Greatly reduces downtime due to mud  
Greatly increases uptime with stability





UpScapers  
91 Seaboard Ln. #103  
Brentwood, Tn. 37027  
[www.upscapers.com](http://www.upscapers.com)

**619-554-0201**