



Roofinggreen®

INSPIRED BY NATURE

**ARTIFICIAL TURF PANEL SYSTEM
FOR
ARCHITECTURE & URBAN LANDSCAPING**



Roofingreen®

Contents

- **Testimonials**
- **Technology & Products**
- **Benefits**
- **About**
- **Applications & Projects**



New York City roof terrace, 2015

«The Roofinggreen tiles were a well-suited solution for our raised roof terrace. The tiles are easy to maintain and replace, the turf is always accessible, and integrated floor LED lighting gives it extra dimension. After several years in the variable New York weather, we remained pleased with the turf appearance, resilience and performance. I recommended it to anyone wanting a green roof terrace or deck.»

Ali Höcek, AC Höcek Architecture –
www.hocекarchitecture.com



Roofingreen®



Ft Lauderdale

rooftop

2021

«The on-site logistics of the tile system are so much easier, a massive time saver; the final result is sensational, with awesome looking turf and much better comfort. We tested in very windy conditions, and the surface is completely stable».

Armando Sariol, Top Green LLC, Fort Lauderdale, FL

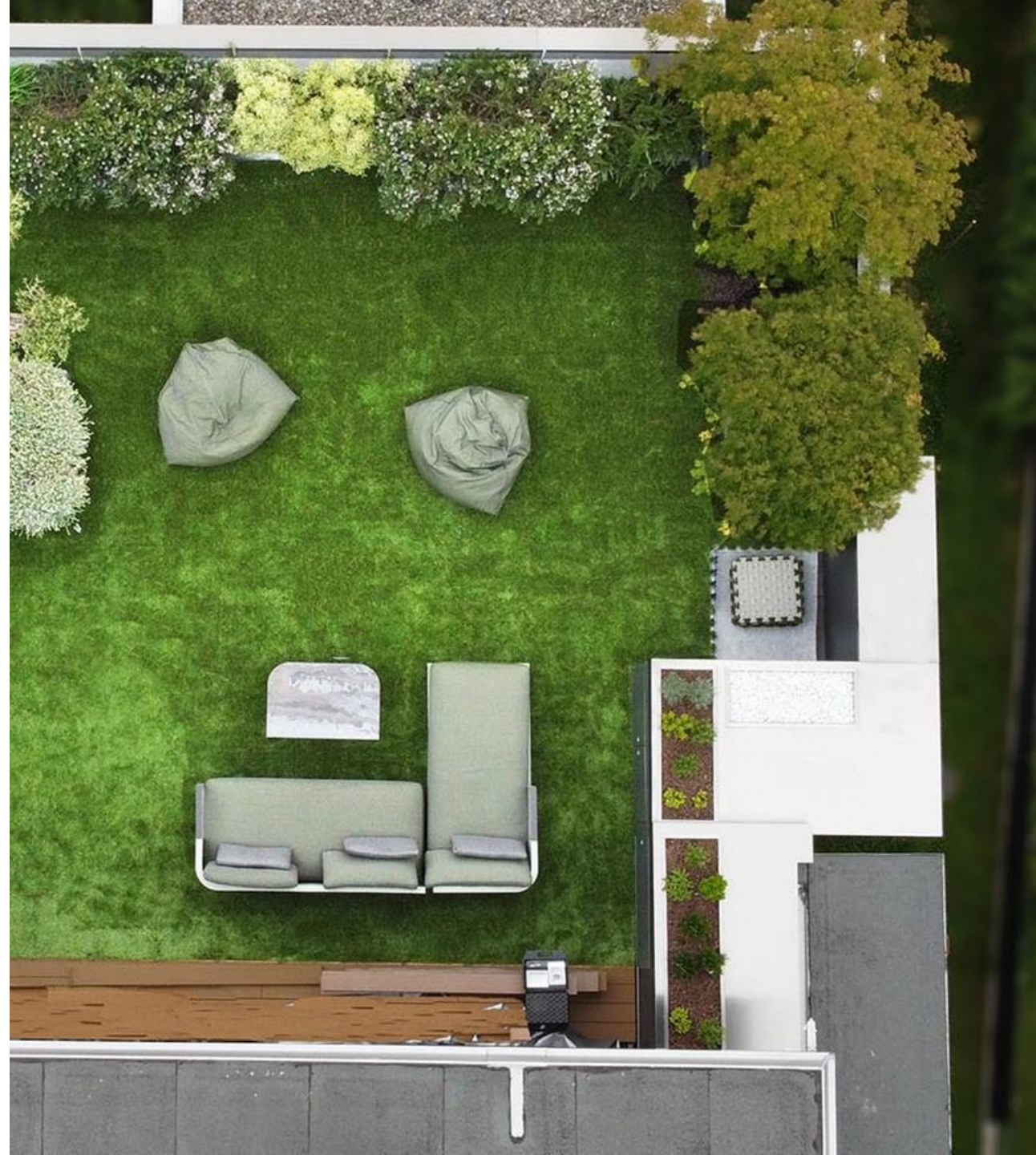


The Concept

Roofinggreen designs and manufactures a unique modular floor panel system to create superior artificial turf surfaces in urban architecture and landscaping.

The multilayer, puzzle-shaped tiles combine improved user experience with technical performance in all climates on any type of substrate and building context.

Roofinggreen represents the essence of Made in Italy high quality design and engineering, style and function in one solution.



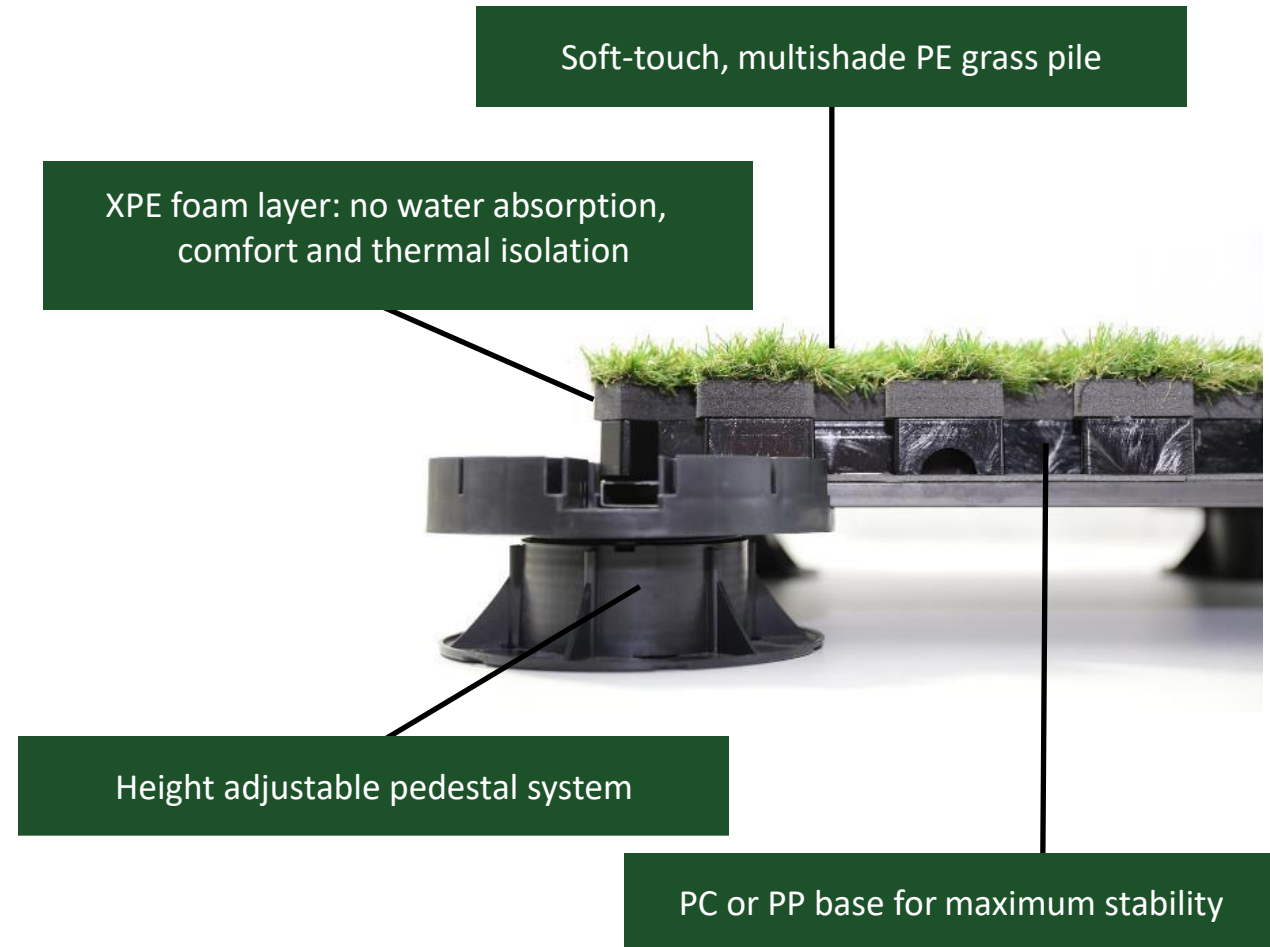


Roofinggreen®
INSPIRED BY NATURE

TECHNOLOGY

Made in Italy

- Modular system of standard 21x21 inch size tiles
- Dovetail design results in interlocking puzzle system
- Minimal thermal dilatation
- Microventilation of underlying substrate
- Floating and raised floor systems





FLOATING FLOOR TILES

Made in Italy



LEAF

- thinnest module of 1 inch height
- light weight
- excellent drainage
- possibility of cable passage
- fast installation



STEP

- aggregate insert for integrated footpath
- custom-designed shape and colour
- integrates into LEAF surface



M10 DRAIN

- module height 1 ½ inch
- very stable surface
- ideal on draining surfaces like gravel, sand
- excellent drainage



GEODRAIN

- structured, multilayer geotextile roll
- improved water flow
- smoothens out surface irregularities
- improves comfort
- eliminates noise generation



RAISED FLOOR TILES

Made in Italy



M20 DRAIN

- tile height 1½ inch, PC base
- excellent drainage capacity
- precise height regulation
- high degree of comfort & stability
- invisible installation of cables & piping



M20

- tile height 1½ inch, PC base
- thermal insulation capacity, potential energy savings
- precise height regulation
- high degree of comfort & stability
- invisible installation of cables & piping



M20 LED

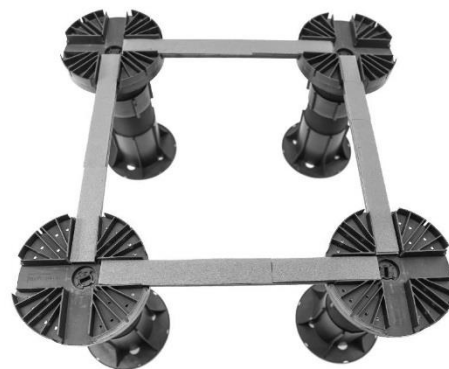
- integrated walk-on LED for ambient lighting
- high quality outdoor certified LED unit
- invisible cable passage



SUPPORT SYSTEMS

Made in Italy

NM PEDESTAL SYSTEM



- high weight load support system
- precise height regulation 3 3/4" – 30"
- very stable and comfortable surface
- efficient installation process
- special Roofinggreen connection head



B SERIES SUPPORT FEET



- height regulation 3 1/2" – 10"
- flexible installation
- perfect for small, complex surfaces





TECHNICAL DATA USA

Product Data	Unit	LEAF	M10 DRAIN	M20 DRAIN
Floor Type		Floating	Floating	Raised
Accessories		Geodrain Mat		NM Pedestal System
Material Composition		PE/PP/XPE	PE/PP/XPE	PE/PP/XPE/PC
		min. 50% recycled; no heavy metals or other hazardous components		
Synthetic Turf Pile Height	inch	1 ½"	1 ½"	1 ½"
Tile Dimension	inch	21" x 21"	21" x 21"	21" x 21"
Tile Surface Area	sq.ft	2 ¾ "	2 ¾ "	2 ¾ "
Tile Height	inch	1"	1 ½"	2"
Tile Weight	lbs	3 ½"	4 ½"	5 ½"
System Height	inch	1 ¼ "	1 ½"	min. 3 ¾ "
System Weight	lbs / sq.ft	1 ½"	1 ¾ "	3 ½"- 4 ½"
Tiles per Box	pcs	32	22	18
Surface per Box	sq.ft	85	60	50
System Load Capacity	lbs / sq.ft	200 lbs	200 lbs	100 lbs
Drainage Capacity	gal./min./sq.ft	1 gal	1 gal	1 gal
CFH (Critical Fall Height)	feet	1 ½"	1 ½"	2"

General Benefits of Artificial Turf in Architectural Applications

- Minimal maintenance
- No need for chemicals
- Durability
- No water consumption
- Clean and hygienic
- Low weight



Benefits of Roofingreen v. Standard Artificial Turf

- User Experience
- Technical Performance
- Ease of Installation
- Sustainability



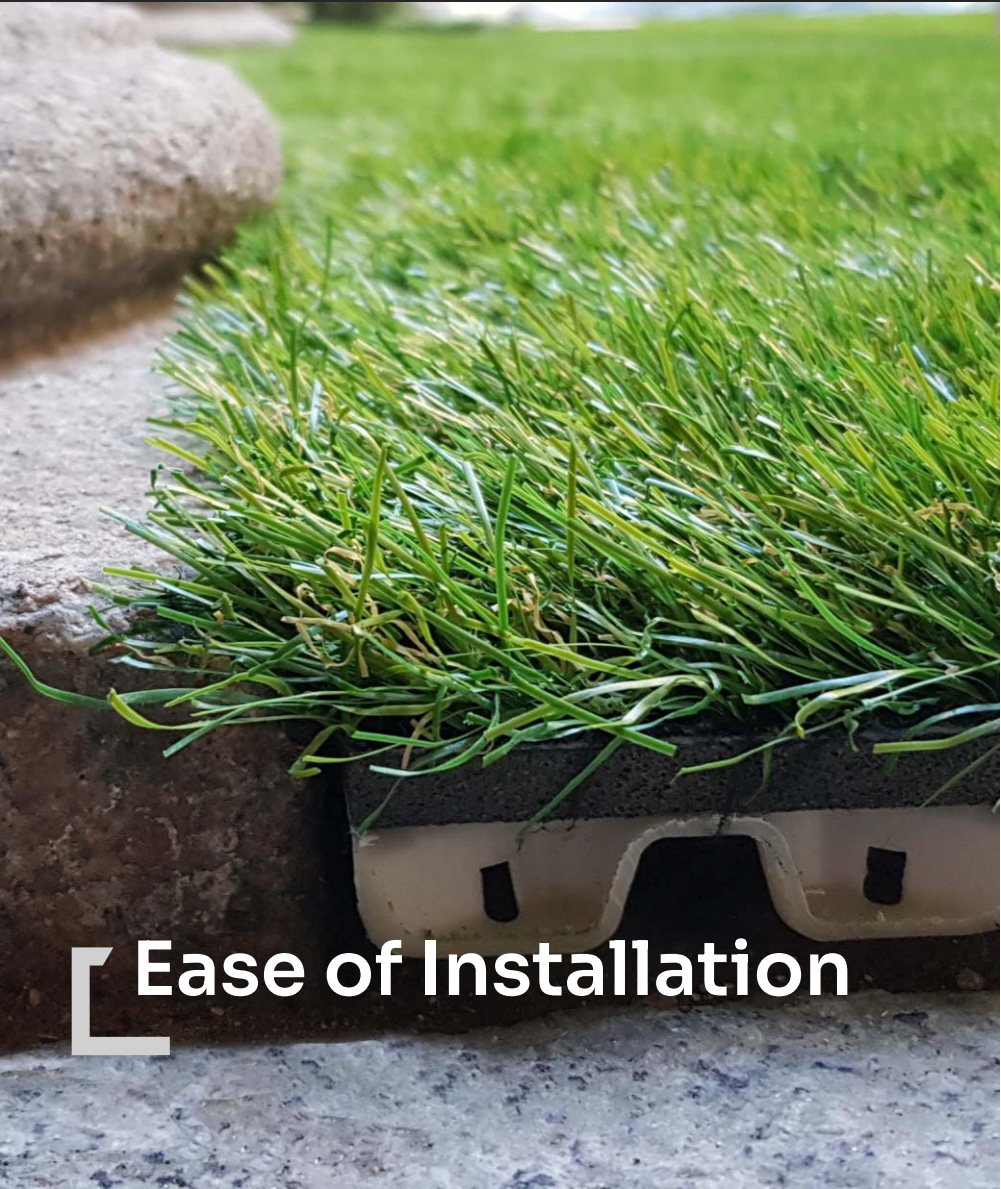
User
Experience

Feature	Detail
Natural look and feel	multi-shade and -shape, soft and resilient at the same time
High comfort, feels like natural turf	intermediate foam layer acts as a shock absorber
Surface always dry & accessible	the tiles do not absorb any humidity; excellent for disabled people
Accessible all-year round in all climates	very cold (no ice formation), wet (superior drainage) and hot & dry
Good anti-slip properties	no ice formation
Much reduced odor from pets	ventilated surface below; no odor absorption; no infill material
Kid & playground friendliness	soft fall impact (HIC value) due to shock absorbing layer
Integrated floor lighting	option to insert LED lighting units with flawless cable integration



Technical
Performance

Feature	Detail
Excellent water drainage	12 invisible drainage holes per tile of 6mm diameter
No mould and rot formation	unique design creates ventilated surface below; air circulation maintains healthy micro-environment
High dimensional stability	material choice and puzzle shape give very low thermal dilatation; no deformation with extreme temperatures
High weight load capacity	raised floors > 500kg/m2; no damage from punctual loads (stileto heels, furniture, plants)
Resistance to chemical agents	detergents, acids, alkalis, salt
High wind load resistance	interlocking panel system
High UV resistance	direct sunlight exposure – high performance additives in fibers; multi-year color shift guarantee



Ease of Installation

Feature	Detail
Low weight	Easy on-site logistics; use of elevators, reduced manpower and no need for cranes
Packaging cardboard boxes	Easy on-site logistics; use of elevators, reduced manpower and no need for cranes
Suitable on most substrates	Waterproof and draining surfaces; smooth and irregular substrates; on top of existing flooring
Minimal surface preparation	No need for multiple base layers
Dry technology; interlocking	No need for gluing & nailing
No need for infill	Turf surface is stable
Flexible in height	Adapts to project specifics; integrates with other materials (wood, stone, etc)
Smooth integration of cables and pipes below the panels	Design allows for sufficient space
Easy to inspect and remove	Single tiles can be lifted; punctual roof inspections, and simple substitution in case of damage



Sustainability

Feature	Detail
Minimal water consumption	only for rinsing & cleaning
Minimal maintenance	easy cleaning; turf resilience
High % recycled materials	min. 75% of raw materials used are recycled or come from industrial waste
Overall long-term durability	expected life time > 10 years
Energy savings	thermal insulation properties through air chamber, both in summer & winter
Extends roof lifetime	Protection of roof membrane (no direct sunlight exposure)
Absence of hazardous chemicals	no heavy metals, no need for fertilisers, herbicides etc.
Increase of property value	extension of actively used surface areas for outdoor living experience

COMPANY HIGHLIGHTS

- Found and run by two architects in 2013
- Made in Italy, headquarters in Turin, Piedmont
- Strong shareholders and industrial partners
- Over 750 projects completed around the world
- ISO 9001 certification and EPD
- Archiproducts Award 2016 for Product Design

Mauro Paris
Architect
CEO, Sales,
Design & Communication



Dario Campra
Architect
Product Development,
Operations, Finance





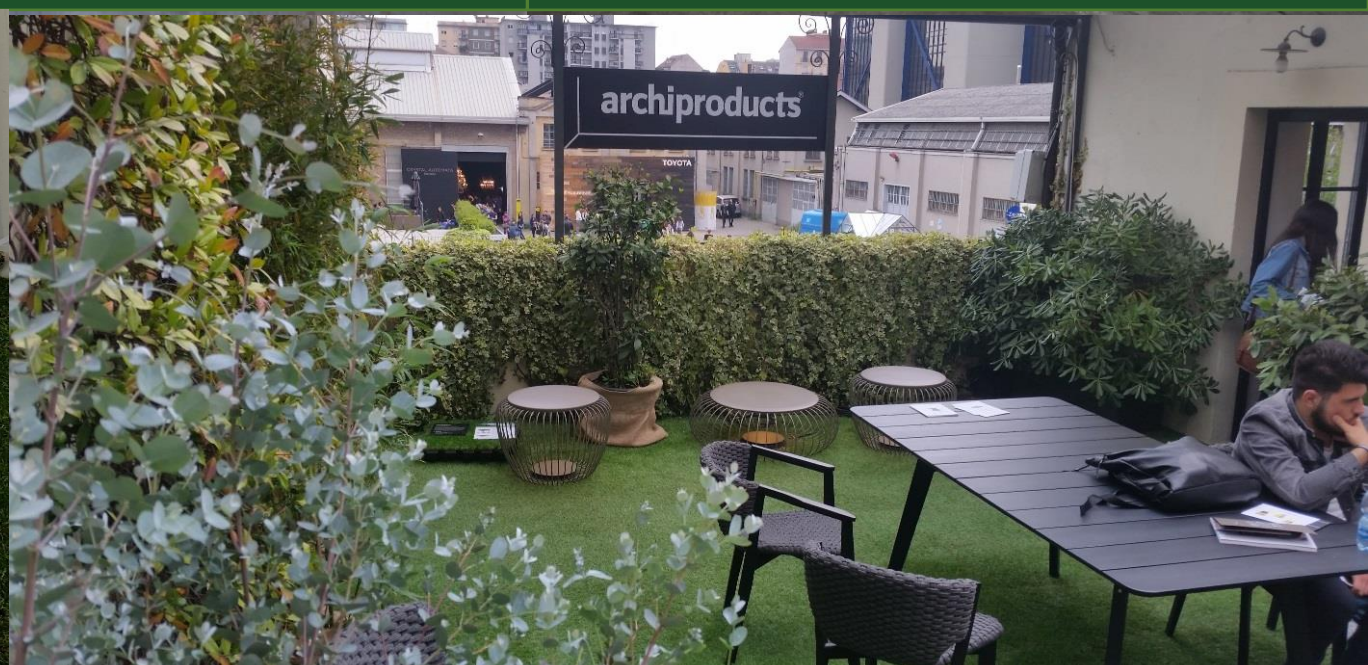
Automated module production line



Finished product warehouse



Certified local installation services



Permanent displays at Archiprodukt showroom, Milan



Residential



Hospitality



Commercial



Public



Landscaping



Temporary

Applications & Projects

Roof Gardens

- Eze – French Riviera, 2021
- Turin – Italy, 2021



Roof Terraces

New York City, 2016



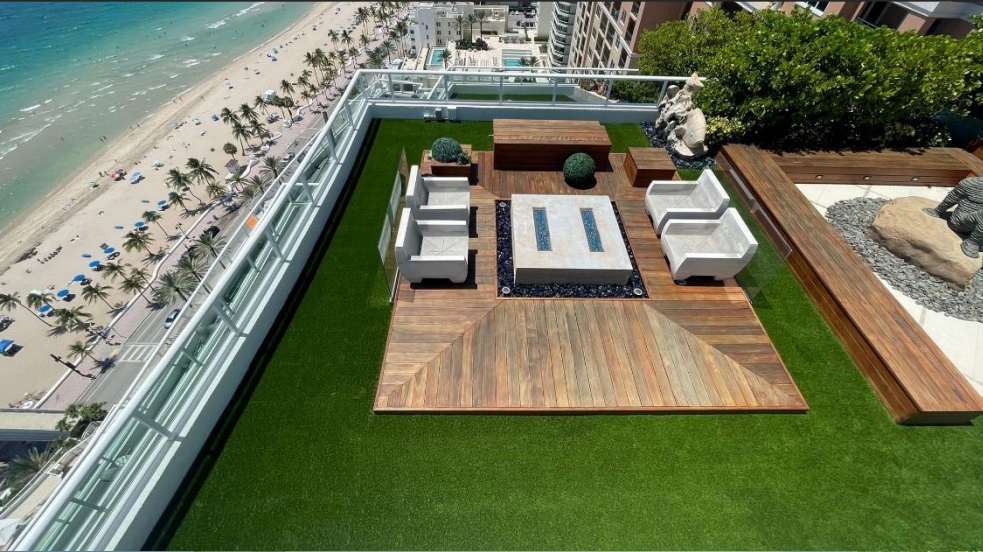
Roof Terraces

Fort Lauderdale, FL 2021



Roof Terraces

Fort Lauderdale, FL 2022



Roof Terraces

Turin - Italy, 2018



Balconies & Decks

Mumbai, India, 2018



Flat Roofs

- Lake Como- Italy, 2020
- Albano Terme - Italy, 2021



Flat Roofs

Grosseto Hospital – Italy. 2018



Pet & Playground Areas

Siena International School – Italy, 2019



Courtyards & Patios

Hyatt, Venice – Italy, 2020



Hospitality

- Caorle – Italy
- Milan – Italy



Gardens & Pool Areas

Tortona – Italy, 2017

Lugano – Switzerland, 2018



Temporary

Elle Decor – Milan, 2020

Fuorisalone – Milan, 2020

